

MANUAL DE MONTAJE
INSTALLATION MANUAL

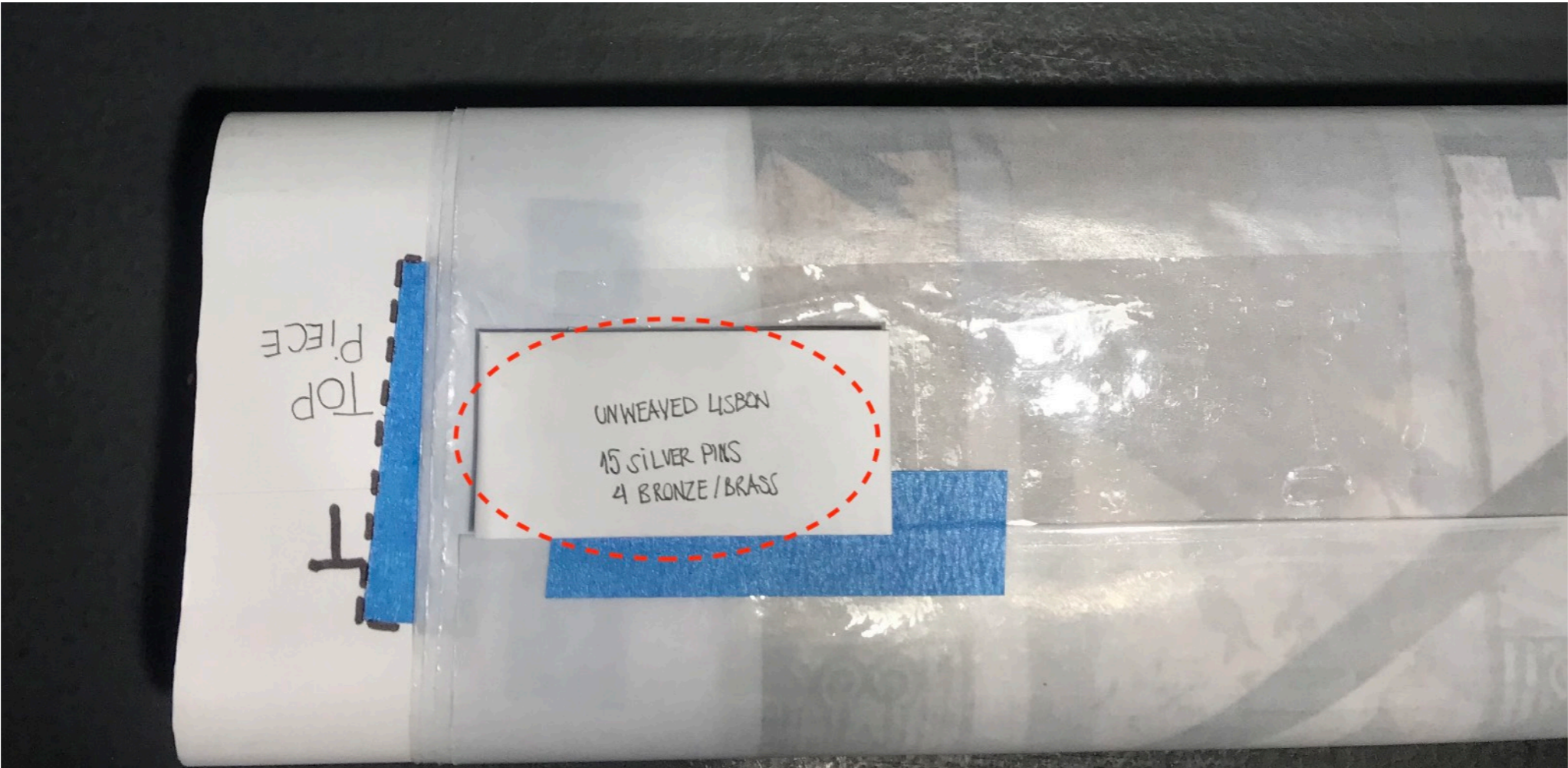
un-weaved Lisbon#1

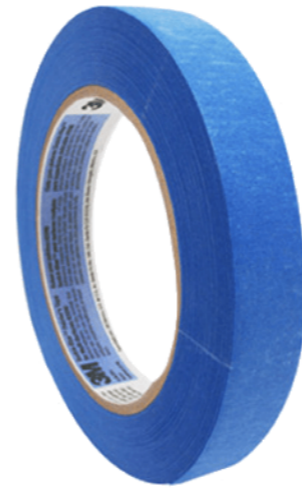
2017-2021

Unwoven dye-sublimated polyester silk, brass, pins

1.50 x 75cms

PARTS: 2 rolls, T*(top) and B*(bottom), envelope with pins and nails



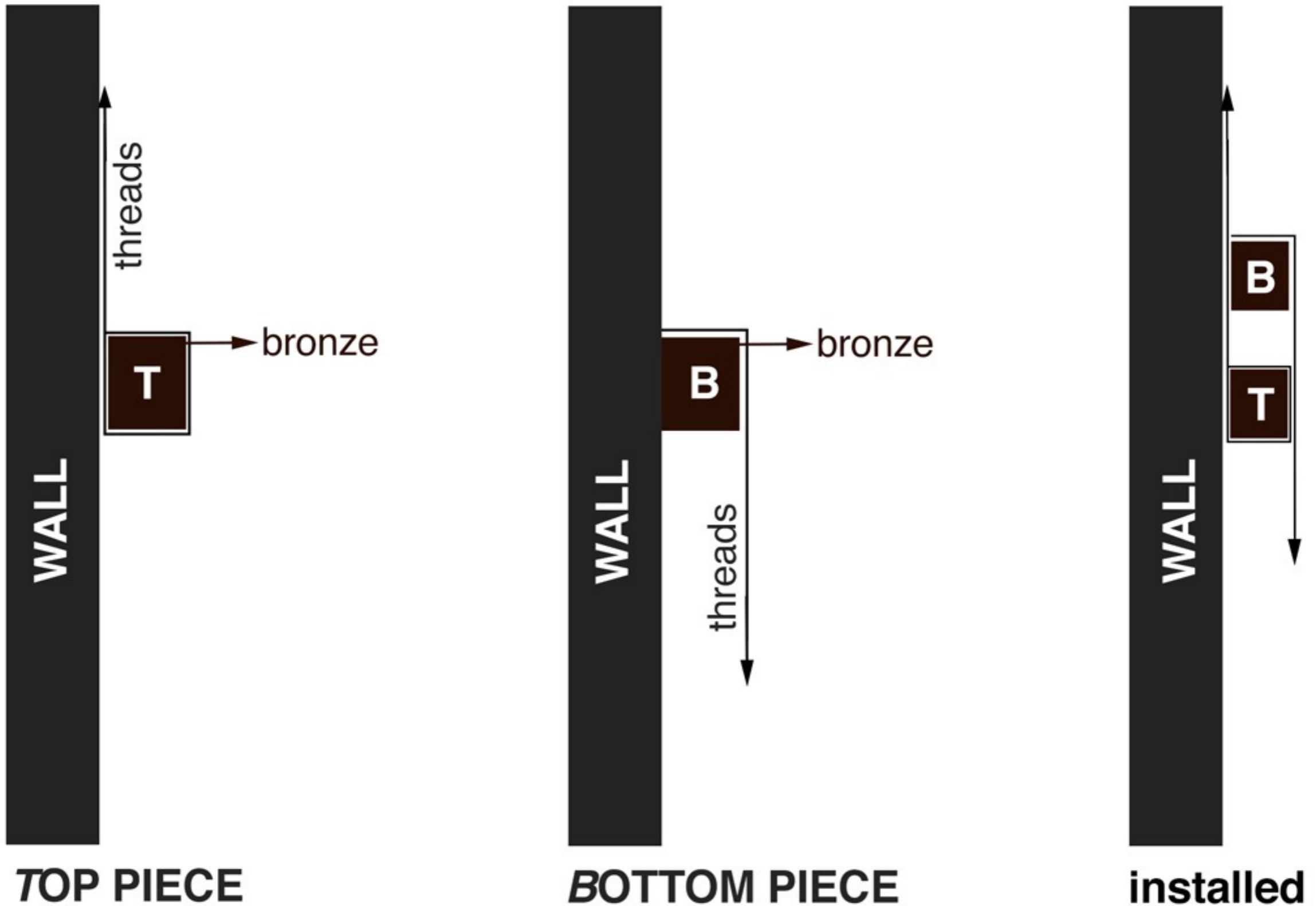


you need:

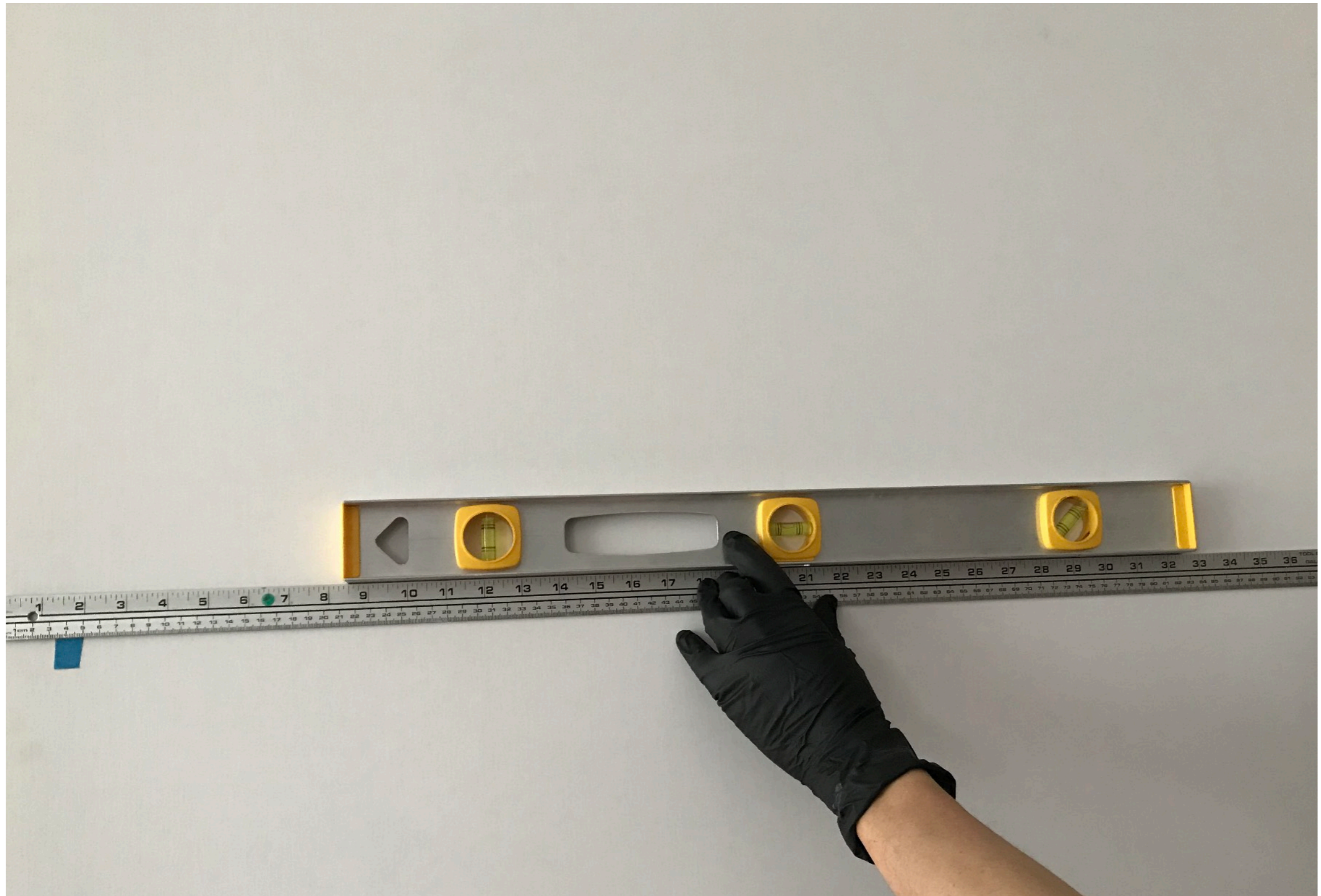
- laser level or bubble level
- blue tape
- long nose pliers
- hammer
- clean surface, table
- pencil

- * **If mounting directly the piece on the wall make sure if the material is drywall or wood.**
- * **Verify the surface for installation. It should be flat and smooth.**

- The piece has 2 parts: T and B. Installed is 1.50 cms long aprox.
- first using the level draw an horizontal line for the Top piece, fix with nails and install the threads.
- Then the Bottom piece goes on top of the straighten threads of the Top piece and simply falls as the graphic shows:



- The step by step video is available in the following link> <https://lehila.net/index.php/years/unweaved/>









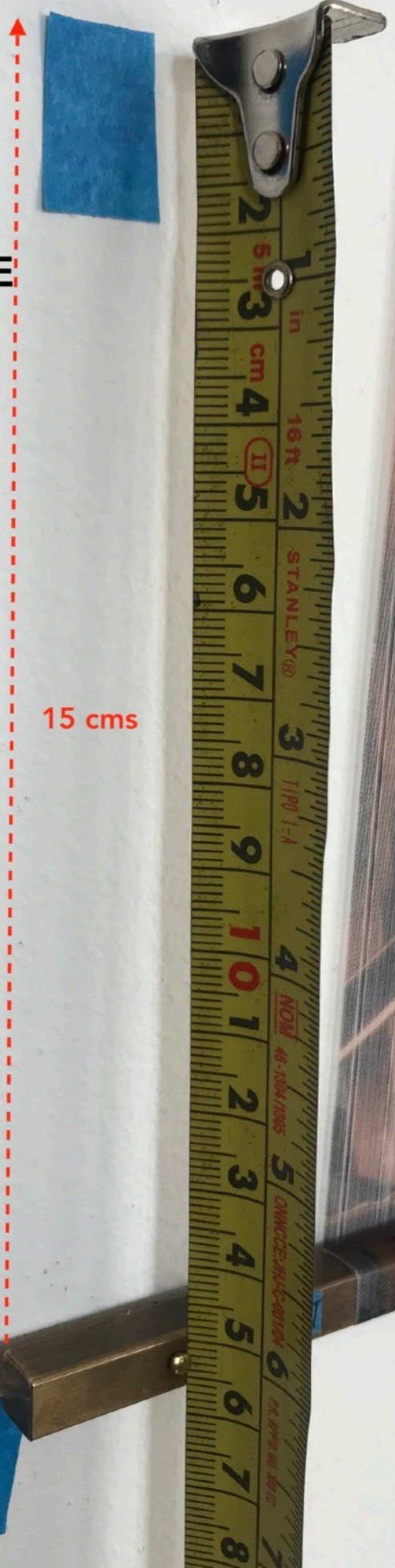


There are strategic holes along the piece,
once the piece is straighten and tense,
identify each hole with the triangles of
blue tape. Carefully fix with silver pins.
Don't nail them completely because at
the end you need to detach the fabric
from the wall generating a space of
aprox. 2 cms between them.

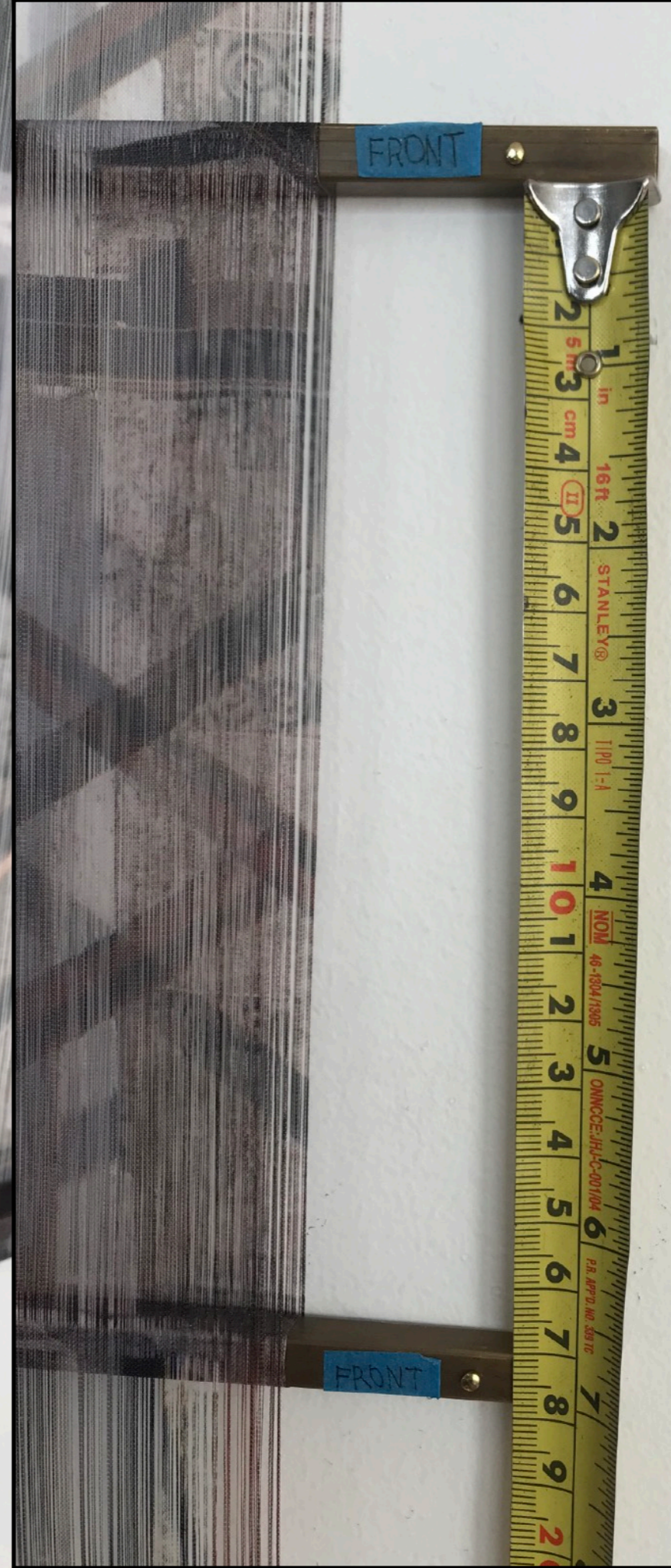
remove the triangles and all tapes once
the installation is finish.

*of course reverse the steps if you need
to move the piece and store it.

WITH THE LEVEL
OR LASER, MAKE
AN HORIZONTAL LINE
AT 15CMS
FROM THE 1ST ONE
TO INSTALL
ROLL #2



15 cms



***you can
install the
second line
either at 15cms
or 17cms.**



piece B

piece T

